



FRIENDS OF WARRNAMBOOL BOTANIC GARDENS

A0032902E

Maintaining and developing Warrnambool Botanic Gardens as an outstanding Guilfoyle garden

NEWSLETTER

Issue Number 85

March 2018

NOTES FROM THE PRESIDENT

Well we are now past the shortest day and soon both flowers and 'Friends' should emerge from hibernation.

We are looking forward to sharing an evening with Jessica Hood and John Sheely on July 11th when we will hold our AGM at the new time of 5.00pm. Details appear later in the Newsletter and we encourage all members to come along and bring a friend. Refreshments will be provided and there will be time to talk and swap ideas.

A trip to Hamilton to the Celia Rosser exhibition was arranged in May and those who went were stunned by both the quantity and quality of her botanic art.

In May many friends of Marie Johnstone gathered in the Gardens to see an oak tree planted in her honour. This is on the northern boundary.

Work on the well is proceeding slowly with bluestone paving to be set down soon. Members of the committee met with Scott Cavanagh, Director of Physical Services WCC and had a good discussion regarding the all abilities toilet, footpaths and charges for use of the Garden facilities. We were disappointed in the Council budget priorities, which initiated fees for open space hire, prior to an appropriate policy being developed as recommended in the Master Plan, and before the completion of the new toilet.

We are now turning our attention to labelling of plants and the development of an interactive map of the Gardens. We look forward to your continuing support.

Pat Varley.



WBG TEAM UPDATE WINTER 2018

Winter is a great time in the gardens where the irrigation controller is turned off and pruning and projects commence.

Although the irrigation controller has been turned off, we are installing a few new pipes, wires and sprinklers throughout the lawns.

Other projects are removal and resurfacing of the bitumen path that is located to the east of the iconic twin Moreton Bay Figs.

Another picnic table and chairs will be installed by the end of this month. This table and chairs will be looking located to the west of the bridge on the northern lawn. Once installed this will bring the total of table and chairs to four.

In accordance with the Masterplan the narrow and non-compliant path leading from the toilets to the main rotunda path is being removed. Once backfilled with soil this area will be turfed.

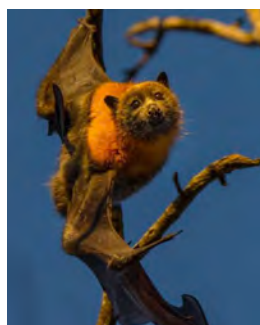
Bed 14 was recently renovated, allowing for a new layer of mulch to be installed and in time replanting will occur.

Despite the cold starts to the day, Winter is a great time to visit the gardens.

John Sheely



Aloe x spinosissima coming into flower.
A very tough plant great for winter colour.



Bats are still very much part of our gardens. Thank you Rodney Harris for sending this photo in. Visit our facebook page for updates, whats flowering and fun photos

GUEST SPEAKER AND AGM

JESSICA HOOD Community Advocate Environmental Heritage at the National Trust of Australia (Victoria) and JOHN SHEELY curator and our team leader will entertain and enlighten us on garden matters. John will give a pictorial presentation and fill us in on some of the achievements and changes to the gardens over his now many years at the gardens.

NOTICE OF AGM

AGM **11th July at 5.30** Hammond Centre in Henna Street.

Light refreshments will be served

Please take note of the change of time. We are hoping this time change will enable people who are tied up during the day to attend. Please bring along friends and family

For a digital copy of the invitation please visit the WBG whats-on [HERE](#)

Australian Association of Friends of Botanic Gardens

The biennial conference of the Australian Association of Friends of Botanic Gardens (AAFBG) was held in Benalla on 20-22 April 2018.

Friends from gardens of all sizes, from diverse climatic regions and with very different histories took part, resulting in a stimulating mix of delegates.

Warrnambool was represented by President and Secretary (Pat and Mandy)

What did we learn?

It was noted that over the past year there has been a trend for many Council-owned regional gardens to see their funding reduced and more reliance put on volunteers. We need to be aware of this and to maintain our partnership with Council and the community to preserve and promote our Gardens. While many Friends groups work well with their council, we heard of the struggle some groups have promoting the worth of their gardens to a disinterested and sometimes hostile council.

It is difficult to quantify in dollar terms the pleasure derived from a beautiful garden or the knowledge of past people, their culture and connection to the land, that comes from our history and forms our heritage. However we need to gather statistics where possible to support our claims that gardens are a social, environmental and economic asset. Visitor numbers, volunteer hours, and positive comment on social media are all evidence.

Informative speakers included Dr Lucy Sutherland, Director of Adelaide Botanic Gardens; Chris Russell, Director of Royal Botanic Gardens, Cranbourne; John Hawker, Heritage Officer (Horticulture) Heritage Victoria and Stuart Read – Horticulturalist and Landscape Architect advising NSW Heritage Council.

At the invitation of the students of Benalla P-12 College we made a memorable visit to their P-4 campus and Stephanie Alexander Kitchen Garden. On a sunny Saturday afternoon we were welcomed by the Principal and some enthusiastic students who had prepared afternoon tea for us. This was followed by a student led walk in the impressive garden and an introduction to their chooks. The school has a kitchen where food from the garden is cooked and eaten by the children. Additional

produce is preserved, bottled and sold as a fund raiser. The production and preparation of food is a compulsory part of the curriculum.

The Benalla Botanical Gardens have a long history. In 1859 land beside the Broken River was set aside as a public recreation reserve. The Gardens were designed and implemented during the 1880s by Alfred Sangwell. The design accommodated a large oval, tennis courts and bowling green. Broad paths swept around these features among a double row of elms and plane trees and a delightful rotunda, built in 1911. They have the feel of a Guilfoyle garden, but we were assured that neither Guilfoyle nor Von Mueller had any part in their creation. A bronze statue of Weary Dunlop tending POWs honours Benalla surgeon Colonel Sir Edward Dunlop, AC, CMG, OBE 1907-93 while an impressive collection of roses dating from 1959 has established Benalla as the City of Roses.

The Friends of Benalla Gardens hosted a friendly and relaxed conference. They showcased their city with pride and welcomed delegates with generous hospitality. We thank them



John Hawker Heritage Officer Heritage Victoria and Philip Moors, AAFBG Patron, planting a Jersey Elm (*Ulmus minor Sariensis*) Visitors to the conference watching on. A copy of the newsletter with full rundown can be found in the Association newsletter, please click [here](#)

FRIENDS OF WARRNAMBOOL

BOTANIC GARDENS Inc

A0032902E

President

Pat Varley (03) 5562 4800

Vice-president

Janet Macdonald (03) 5562 4059

Secretary

Mandy King 0438620343

Treasurer

Fiona Rule 0438 622 199

Committee

Joan Keith (03) 55624377

Anne Lynch (03) 5562 1303

Judi Phillips (03) 5562 3320

Billie Rowley (03) 5561 1583

Susan Ewers (03) 5562 5608

Heather Martin-Trigg

Correspondence:

Friends of Warrnambool Botanic Gardens Inc.

P.O. Box 1190

Warrnambool 3280

Email: friends@wbgardens.com.au

Our newsletter is published spring, summer, autumn and winter.

If you would like to contribute to our publication please forward material to the above address.

Membership: Payable at/or by the AGM

July 2018

To save time, paper and postage

Please ask to have your Newsletter sent by email.

Send us an email at friends@wbgardens.com.au

and we will put you on the email list

WARRNAMBOOL BOTANIC GARDENS WEB SITE AND FRIENDS OF THE WBG

The web site now has a secure SSL certificate ensuring it is safe for all to visit.

There is so much to be learned about the gardens by visiting the site, please click [HERE](#)

Funding has been applied for to create an interactive tree database, so come back soon

MEMBERSHIP PAYMENTS

Payment method

Click [here](#) to go to online payment information

Direc Payment

EFT:

BSB: 083 957

Account Number: 048342632

Refer: Name

Cheque to:

Friends of Warrnambool Botanic
Gardens Inc.

P.O. Box 1190,

Warrnambool. 3280

Single : \$20

Family: \$25

Corporate: \$100

GUIDED TOURS

To organise a tour please contact a committee member or email friends@wbgardens.com.au